



STANDARD/LUXURY SERIES INSTALLATION INSTRUCTIONS

WHIRLPOOL MODELS: CW6600, CW5500, CW4272, CW3672, CW3666, CW3666CD, CW4260, CW3660, CW3260, CW3060, CW3660ROV, CW4260-O, CW4260ROV, CW4272ROV, CW4270-O, CW4270CD, CW4472, CW6036, CW7236, CW7242, CW7042, CW6636, CW6042, CW6036, CW6032, CW6030, LW6600, LW4872, LW4272, LW4272CD, LW4472, LW3672-CD, LW4260, LW3660, LW3060

SOAKING TUB MODELS: CT6600, CT5500, CT4272, CT3672, CT3666, CT3666CD, CT4260, CT3660, CT3260, CT3060, CT3660ROV, CT4260-O, CT4260ROV, CT4272ROV, CT4270-O, CT4270CD, CT4472, CT6036, CT7236, CT7242, CT7042, CT6636, CT6042, CT6036, CT6032, CT6030, LT4872, LT4272, LT4272-CD, LT4472, LT3672, LT4260, LT3660, LT3060



LISTED
HYDROMASSAGE BATHTUB
93FO E143746

NOT SUITABLE FOR FIELD INSTALLED HEATER READ AND FOLLOW ALL INSTRUCTIONS

INSPECT THIS SHIPMENT FOR POSSIBLE TRANSIT DAMAGE

This unit has been factory tested for leaks and workmanship. Damage may occur during shipping or in the actual installation. It is required that the unit be field tested prior to final installation. Failure to do so may result in voiding the manufacturer's warranty. Under no circumstances will the manufacturer be liable for any damage due to leaks by the unit.

HOW TO WATER TEST

Fill the unit with water to a level one inch above the jets and visually inspect all fittings for any static leaks. If any leaks are noticed, contact your dealer or the factory at once. Do not install the unit until the leaks are repaired.

IMPORTANT SAFETY INSTRUCTIONS

WARNING: WHEN USING THE UNIT, BASIC PRECAUTIONS SHOULD ALWAYS BE FOLLOWED, INCLUDING THE FOLLOWING:

- 1) READ AND FOLLOW ALL INSTRUCTIONS.
- 2) **DANGER:** To reduce the risk of injury, do not permit children to use this unit unless they are closely supervised at all times.
- 3) Use this unit only for its intended use as described in this manual. Do not use attachments not recommended by the manufacturer.
- 4) Never drop or insert any object into any opening.
- 5) **DANGER:** RISK OF ELECTRICAL SHOCK. This unit must be connected only to a supply circuit that is protected by a ground-fault circuit interrupter (GFCI). Such GFCI should be provided by the installer and should be tested on a routine basis. To test the GFCI, push the test button. The GFCI should interrupt power. Push the reset button. Power should be restored. If the GFCI fails to operate in this manner, there is a ground current flowing, indicating the possibility of electric shock. Do not use the unit. Disconnect the unit and have the problem corrected by a qualified electrician.
- 6) Never operate this unit without the guard (strainer) over the suction fitting.
- 7) **FOR PERMANENTLY CONNECTED UNITS:** A green colored terminal (or a wire connector marked “G”, “GR”, “Ground”, or “Grounding”) is provided within the terminal compartment. To reduce the risk of electric shock, connect this terminal or connector to the grounding terminal of your electric service supply panel with a conductor equivalent in size to the circuit conductors supplying this equipment.
- 8) **SAVE THESE INSTRUCTIONS.**

PRE-INSTALLATION INSTRUCTIONS

- 1) Prior to installation, insure that sufficient clearance is provided for all plumbing. An access panel (16” x 20”) MUST be provided for inspection and service of the pump and any electrical components.
- 2) During construction, the unit is vulnerable to damage caused by falling objects or workmen standing in the unit. PLEASE take precautions to cover the unit with the protective cardboard for as long as possible.
- 3) **NEVER STORE OTHER CONSTRUCTION MATERIALS INSIDE THE UNIT.** This is one of the leading causes of field damage.

RECOMMENDED PRECAUTIONS

- 1) Upon receiving your unit, remove it from its protective packaging and inspect it for damage which may have resulted in transit.
- 2) Any alterations, additions, or deletions made to the unit's plumbing system, pump/blower motor, or any deviation from the recommended installation instructions WILL VOID THE WARRANTY.
- 3) Literature dimensions are for reference only. Actual measurements should be taken from the tub.
- 4) NEVER PICK THE UNIT UP BY ITS PLUMBING AS THIS CAN CAUSE SEVERE DAMAGE TO THE PLUMBING SYSTEM. Any damage to the system stemming from mishandling will not be covered under the warranty.
- 5) All electrical wiring should be done by a licensed electrician and should comply with all applicable local codes.
- 6) Location of the TIMER or SWITCH for the unit must be in compliance with all local codes to eliminate the possibility of electric shock. THE UNITS POWER SOURCE MUST BE ON A GFCI (GROUND FAULT CIRCUIT INTERRUPTOR).
- 7) ALL BUILDING MATERIALS AND WIRING SHOULD BE ROUTED AWAY FROM THE PUMP/ BLOWER OR ANY OTHER HEAT PRODUCING COMPONENTS.
- 8) UNDER NO CIRCUMSTANCES should the whirlpool system be activated when there is no water in the system. The water level must be at least one inch above the circulating jets or damage to the system may occur. The Thermal Air system can be activated when there is no water in the unit without risk of damaging the system.
- 9) The TRADEWIND UNIT does not include a system for filtration. Therefore, it is recommended that the system be drained immediately after every use.

THE FOLLOWING INSTALLATION DETAILS ARE TO BE USED FOR DIFFERENT INSTALLATION APPLICATIONS. SOME NECESSARY PRECAUTIONS ARE LISTED BELOW.

- 1) The flange of the unit must be supported with either a ledger strip or a knee wall. This is to prevent any movement in the flange and is not to support the total weight of the tub.
- 2) The base of the unit must be shimmed or placed in a grout or mortar bed to assure positive contact with the sub-floor. The supporting base made on the tub is designed to carry the total load of the tub.
- 3) An access panel **MUST** be left for service and inspection of the pump/blower and any electrical connections. This access panel needs to be at least 16" x 20".
- 4) This unit **MUST** be water tested for leaks before the unit is completely enclosed.
- 5) All rough in dimensions are for reference only, and actual measurements should always be taken from the unit itself.

ROUGH IN DIMENSIONS

Model	Length	Width	Height
CW/CT/LW6600	66"	66"	20"
CW/CT5500	60"	60"	20"
CW/CT4272ROV	71-3/8"	41-1/2"	19-1/2"
CW/CT4272	71-1/2"	41-1/2"	20-1/4"
CW/CT3672	71-3/4"	36"	20"
CW/CT3260	59-1/2"	32"	19-1/2"
CW/CT3660	59-1/4"	35-1/2"	19"
CW/CT3666	65-1/2"	35-1/2"	20"
CW/CT3666CD	65-1/2"	35-1/2"	22"
CW/CT4260	59-1/4"	41"	19"
CW/CT3060	60"	30-1/2"	19"
CW4270-O	68-1/4"	41"	20"
CT4270-O	68"	40"	20"
CW/CT4270CD	68"	40-1/2"	18-3/4"
CW/CT4260-O	59"	41-1/2"	18"
CW/CT4260ROV	59-1/2"	41-1/2"	19"
CW/CT3660ROV	59"	35-3/4"	19"
CW4472	72"	44"	23"
LW/LT4272	71-1/2"	41-1/2"	22-1/2"
LW/LT4272CD	71-1/2"	41-1/4"	23-1/2"
LW/LT3672CD	71-1/2"	35-3/4"	23"
LW/LT4260	59-1/4"	41-1/2"	22-1/2"
LW/LT3060	60"	30-1/2"	19"
LW/LT3660	59-1/4"	35-3/4"	22-1/2"
LW/LT4472	72"	44"	23"
LW/LT4872	71-1/2"	48"	22-1/2"

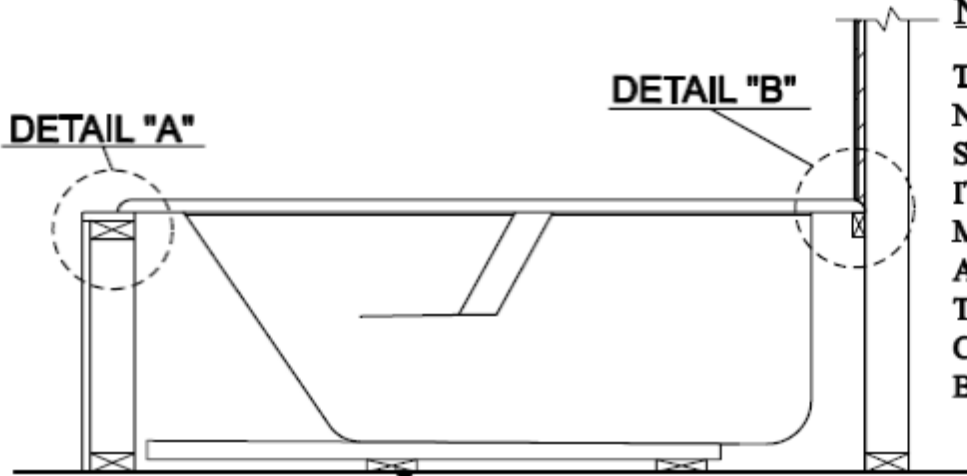
Model	Length	Width	Height
CW/CT6036	59-1/4"	36"	23"
CW/CT7236	72"	36"	23"
CW/CT7242	72"	42"	23"
CW/CT7042	70"	42"	23"
CW/CT6636	66"	36"	23"
CW/CT6042	60"	42"	23"
CW/CT6036	60"	36"	23"
CW/CT6032	60"	32"	23"
CW/CT6030	60"	30"	23"

NOTE: For a detailed specifications sheet, complete with measurements and electrical requirements, please contact your local dealer or the factory.

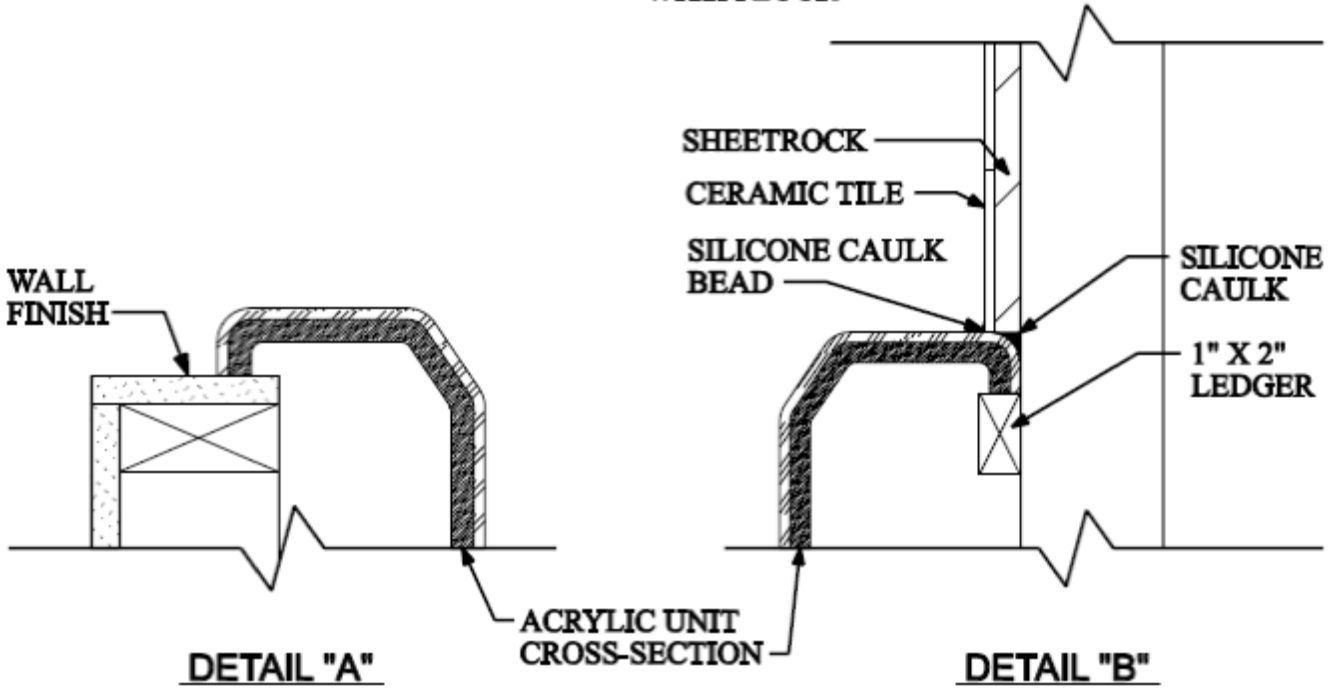
INSTALLATION DETAILS

NOTE:

THIS UNIT REQUIRES NO EXTRA FLOOR SUPPORTS SINCE IT DISPLACES NO MORE OF AN ABNORMAL LOAD THAN THAT OF A CONVENTIONAL BATH SYSTEM.



SHIM UNIT TO ASSURE POSITIVE CONTACT WITH FLOOR



ELECTRICAL INSTALLATION

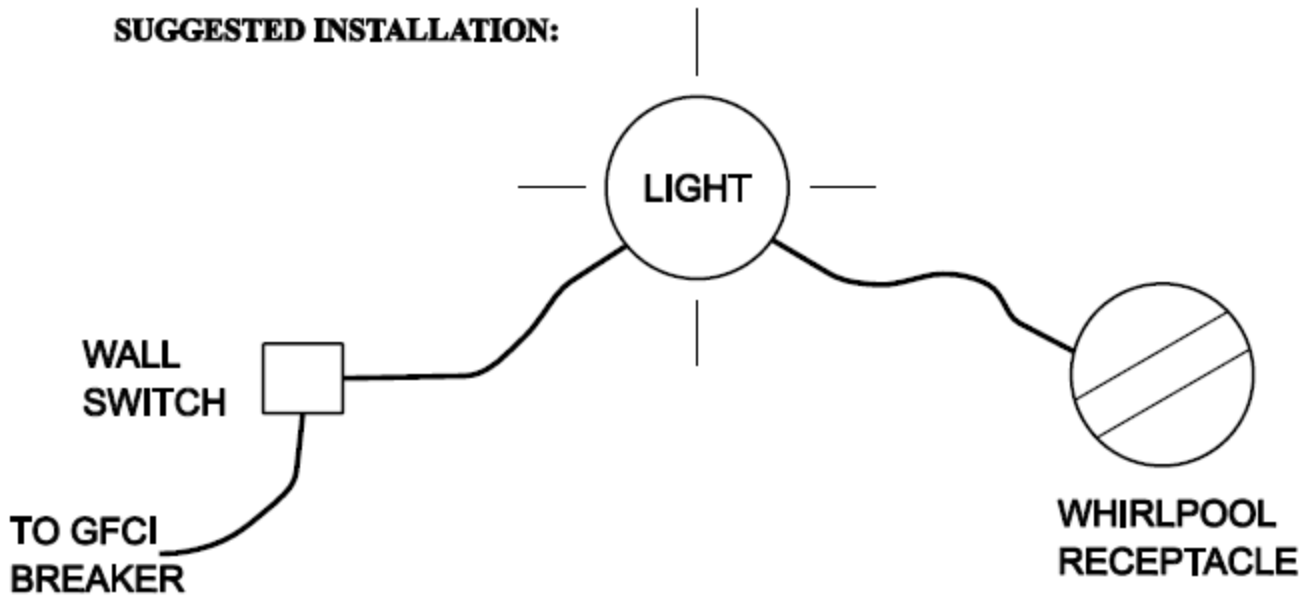
WARNING: HAZARDOUS VOLTAGE CAN CAUSE SEVERE OR FATAL INJURY. THIS UNIT MUST BE INSTALLED AND GROUNDED BY QUALIFIED PERSONNEL PER NATIONAL ELECTRIC CODE AND LOCAL CODES. TERMINAL COVER MUST BE IN PLACE FOR SAFE OPERATION. DISCONNECT POWER BEFORE SERVICING THIS UNIT. KEEP FINGERS AND FOREIGN OBJECTS AWAY FROM OPENINGS AND MOVING PARTS.

DANGER: RISK OF ELECTRIC SHOCK. CONNECT ONLY TO A CIRCUIT PROTECTED BY A GROUND-FAULT CIRCUIT INTERRUPTER (GFCI).

NOTICE

INSTALL POWER FOR THE WHIRLPOOL ON A SWITCHED RECEPTACLE.

SUGGESTED INSTALLATION:



REFER TO THE IMPORTANT SAFETY INSTRUCTIONS FOR MORE INFORMATION

NOTE: IT IS RECOMMENDED THAT THIS UNIT BE PROTECTED BY A SURGE PROTECTION DEVICE.

PNEUMATIC OPERATING INSTRUCTIONS

Pneumatic controls will have one, two, or three round push buttons depending on the options.

DANGER: KEEP HAIR AND CLOTHING A MINIMUM OF 12” AWAY FROM ALL SUCTION FITTINGS AT ALL TIMES. PERSONS WITH LONG HAIR SHOULD EITHER SECURE THEIR HAIR TO A MINIMUM LENGTH OR WEAR A BATHING CAP.

CHILDREN SHOULD NOT BE LEFT UNATTENDED AT ANY TIME IN THE UNIT.

WHIRLPOOL

- 1) DO NOT START THE PUMP UNTIL ALL WATER JETS ARE COVERED COMPLETELY.
- 2) To activate the whirlpool press the round pneumatic button once.
- 3) To deactivate the whirlpool press the round pneumatic button again.

THERMAL AIR

- 1) The Blower has three speeds. Press the round button once for high, press a second time for medium, press a third time for low speed, and to turn the blower off press the button a fourth time.
- 2) The unit will run for twenty minutes and turn itself off. If you desire to restart the unit for another twenty minute cycle, repeat step one.
- 3) When the unit is turned off for the final time, the purge cycle is started. After twenty minutes the unit will automatically turn itself on for one minute. The purpose of the purge cycle is to flush any residual water out of the system. It is necessary for the unit to be drained prior to the purge for it to be affective.

Important Note: Any time you put water into the unit and do not turn on the Thermal Air (i.e. take a shower, clean the unit, or take a soaking bath) one must turn the unit on and then off as detailed above. This will start the purge cycle to flush the system of residual water.

MICRO AIR

- 1) DO NOT START THE PUMP UNTIL THE WATER JET IS COVERED COMPLETELY.
- 2) To activate the Micro Air system press the round pneumatic button once.
- 3) To deactivate the Micro Air system press the round pneumatic button again.

ELECTRONIC OPERATING INSTRUCTIONS

Electronic controls will have either a round or oval keypad with the TradeWind Logo Insignia printed on them. Please disregard these instructions if this unit doesn't have this keypad.

DANGER: KEEP HAIR AND CLOTHING A MINIMUM OF 12" AWAY FROM ALL SUCTION FITTINGS AT ALL TIMES. PERSONS WITH LONG HAIR SHOULD EITHER SECURE THEIR HAIR TO A MINIMUM LENGTH OR WEAR A BATHING CAP.

CHILDREN SHOULD NOT BE LEFT UNATTENDED AT ANY TIME IN THE UNIT.

WHIRLPOOL ONLY

- 1) To activate the whirlpool first fill the tub with water above the highest jet, and then press the ON button on the round keypad.
- 2) To turn the whirlpool off press the OFF button on the round keypad.

THERMAL AIR

- 1) To activate the thermal air press the ON/OFF button once.
- 2) To increase/decrease the air volume coming from the air jets press and hold the middle button until the desired volume is reached. The button will cycle between the increase mode and decrease mode every time the button is released and then pressed again.
- 3) The system has two pulse cycles that are controlled by the right button. Press this button once for an increasing/decreasing cycle, and twice for an on/off cycle.
- 4) To deactivate the Thermal Air press the ON/OFF button.

PURGE CYCLE

When the Thermal Air is turned off for the final time, the purge cycle is started. After twenty minutes the unit will automatically turn itself on for one minute. The purpose of the purge cycle is to flush any residual water out of the system. It is necessary for the unit to be drained prior to the purge for it to be effective.

Important Note: Any time you put water into the unit and do not turn on the Thermal Air (i.e. take a shower, clean the unit, or take a soaking bath) you must turn the unit on and then off as detailed above. This will start the purge cycle to flush the system of residual water.

CLEANING AND MAINTENANCE

Flushing of the pump and piping or circulation system should be done monthly when the system is under normal use.

The following procedures should be used:

- 1) Fill the tub with hot water above the jets and add one to two (1-2) cups of vinegar **OR** bleach.
- 2) Activate the system and let it run for 10 minutes.
- 3) Turn the system off and let it stand for 10 minutes.
- 4) Drain the unit completely.
- 5) Fill the tub with cold water above the jets.
- 6) Repeat steps 2-4.

DURING CLEAN-UP, USE MILD NON-ABRASIVE CLEANING AGENTS. DO NOT USE ACETONE OR LAQUER THINNERS SINCE THEY WILL HARM THE ACRYLIC SURFACE. THE FOLLOWING CLEANERS ARE RECOMMENDED:

- Glass cleaner is the most widely used and most highly recommended cleaners.
- Alcohol or mineral spirits may be used on difficult cleaning areas.

Scratches may be removed by sanding and buffing the surface. However, you should first consult a professional or contact the manufacturer before performing this task. A mild polishing agent such as Jewelers Rouge or very mild abrasive toothpaste can be used on slight surface scratches. Always polish with a soft cotton cloth. DuPont No. 7 White Polishing Compound may be used on slight surface scratches.

Whenever in doubt, it is always recommended that you consult your local dealer or the manufacturer before attempting any repair other than normal routine maintenance. The acrylic finish on your TradeWind bathtub is one of the most durable materials available, but certain cleaning products can harm the acrylic surface. Please use the cleaners listed above if at all possible.



TWENTY YEAR LIMITED WARRANTY

TradeWind Industries, Incorporated warrants to the residential user of its acrylic products that all tubs, whirlpools, and Thermal Air units manufactured by it will be free from defects in material and workmanship which might adversely affect the performance of the products as a bathing unit for a period of twenty (20) years. Motor, pumps/blowers, metallic finishes, plumbing, and hardware are warranted for a period of five (5) year only.

Our obligation under this warranty shall be limited to the repair of said unit or replacement BUT SHALL NOT INCLUDE LABOR CHARGES FOR THE REMOVAL AND REPLACEMENT OF THE UNIT or other expenses such as transportation costs. This warranty applies only to residential use and will become void if the unit and its fixtures are installed in violation of any applicable local, state, or national code or if removed from the point of original installation and/or installed by methods other than those shown on the installation sheets provided.

This warranty shall not apply and we shall have no liability for damages resulting from abuse or misuse of the unit or accidental damage incurred during installation. The unit is carefully inspected before shipment and any chips, cracks, or blisters are to be considered shipping or handling damage and are not covered under this limited warranty.

This warranty is non-transferable by the original purchaser and is effective only if a photocopy or the original purchase receipt is submitted along with a written request for claim action. All claims should be made to:

TRADEWIND INDUSTRIES, INC.
CUSTOMER SERVICE DEPARTMENT
7612 DRAG STRIP ROAD
FAIRVIEW, TN 37062

Claims must be filed within thirty (30) days after discovery of the defect to be considered under this Limited Warranty. After receipt of such notice, TradeWind Industries, Inc. will make an investigation and endeavor to adjust the claim as quickly as possible.